

**Product Dynamics and Aggregate Shocks:
Evidence from Japanese Product and Firm Level Data¹**

This version: June, 2018

Robert Dekle

USC

Nobuhiro Kiyotaki
Princeton University

Atsushi Kawakami

Toyo University

Tsutomu Miyagawa
Gakushuin University and RIETI

¹ We thank Joel David, Steven Davis, Masahisa Fujita, Kyoji Fukao, Huiyu Li, Masayuki Morikawa, Shintaro Nishioka, Kozo Kiyota and conference participants at USC, the NBER-Japan Project 2016, Stanford-Juku 2016, ABFER 2016, Hitotsubashi University, Keio University, and Gakushuin University for helpful comments on an earlier draft. This study is conducted as a part of the Project “Study on Productivity Growth at the Firm Level” undertaken at Research Institute of Economy, Trade and Industry (RIETI), and supported in part by a Grant-in-Aid for Scientific Research from the Ministry of Education, Culture, Sports, Science and Technology (No. 15H03351 and No. 18H00852) of Japan and the U.S. National Science Foundation.

Abstract

Conceptually linking product adding and dropping to business cycles goes back to at least Shumpeter. We examine the effects of shocks to aggregate productivity, foreign demand, and government expenditures on the dynamics of products of heterogeneous firms. Our structural empirical specifications connecting macroeconomic shocks to product dynamics are based on a neoclassical dynamic general equilibrium model (Dekle, Jeong and Kiyotaki, 2014, hereafter we call DJK).

We first construct unique firm level data on products and exports from the Japanese *Census of Manufactures* in the period from 1999 to 2009. The data are more disaggregated than comparable U.S. data and available at the annual frequency (while U.S. product level data are only available at five year intervals), which makes our data more suitable for examining the interaction between the business cycle and firm-product dynamics. Using this dataset, we are able to observe the change in composition of products at the firm level in Japan. Our unique data shows that product adding and dropping behavior in incumbent firms affects fluctuations in the aggregate shipments more than firm entry and exit. When we divide our dataset into exporters and non-exporters, we find that exporters produce more products than non-exporters. In addition, product switching behavior of exporters is more dynamic than non-exporters.

Following the DJK model, we regress change in number of products on the several aggregate variables such as foreign demand, government expenditures, and the aggregate productivity. Our estimation results show that foreign demand strongly increases number of products in the estimation without real effective exchange rate. When we focus on exporters, the positive effects of foreign demand are stronger than those using all samples. In addition, the government expenditures or real effective exchange rate significantly affect number of products of exporters. Although the previous studies have emphasized the supply side effect on product

innovation, our empirical work shows that the shock on the aggregate demand affects the increase in new products.

When we add firm-level TFP to our estimation, we find the relationship between product innovation and relative TFP is U-shaped. The result means that not only higher TFP firms but also lower TFP firms are aggressive in product innovation.

Keywords: Product switching, Entry and exit, TFP, Foreign demand shock, Government expenditure shock, Real effective exchange rate

JEL classification: E32, F12, F14, F41, L11, L25, O31

Corresponding author : Tsutomu Miyagawa

Faculty of Economics, Gakushuin University

1-5-1 Mejiro, Toshima-ku, Tokyo, 171-8588, Japan

Tel: +81-3-5992-2257

Fax: +81-3-5992-1007

[E-mail:19990230@gakushuin.ac.jp](mailto:19990230@gakushuin.ac.jp)

1. Introduction

Studies on firm dynamics developed by Hopenhayn (1992) and Meritz (2003) have much affected the understanding of productivity growth and international trade. These studies imply that entry of high productivity firms and exit of low productivity firms enhance productivity improvement in the aggregate economy. Following their studies, business cycle models in a general equilibrium framework incorporating firm dynamics have been developed by Ghironi and Meritz (2005), Samiengo (2007), and Jaimovich and Floetott (2008). They examine the effects of aggregate technology shock, deregulation, and firing costs on aggregate variables such as GDP and consumption.

However, the effects of entry and exit on productivity improvement are not large in the US and Japan. Hsieh and Klenow (2017) argue that most productivity improvements through innovation have come from new products from incumbent firms. Fukao and Kwon (2006) also show that TFP fluctuations from incumbent firms dominate the aggregate productivity movements and the reallocation effects through entry and exit are small.

Fluctuations in output of productivity in incumbent firms are divided into two parts: movements in existing products and entry and exit of products. Earlier empirical work have shown that product dynamics are a major source of productivity movements over the medium- and long-runs.² Kawakami and Miyagawa (2013) show that the contribution rate of product adding and dropping to labor productivity growth is as twice as the total labor productivity growth.

Figure 1-1 shows the movements of shipments in the manufacturing sector in Japan from 1999 to 2009, which are highly cyclical. The first recession which occurred from 2000 to 2002 was affected by the collapse of the IT bubble economy in the U.S. The second recession starting in 2007 was affected by the global financial crisis. We see that during both recessions, the growth in

² See for example, Aghion et. al. (1992), and Bernard, Redding, and Schott (2010).

manufacturing shipments was negative (solid line). These movements in total shipments can be decomposed into the following components: new firm entry, firm exit, product adding of incumbent firms, product dropping of incumbent firms, and changes in continuing products by incumbent firms. An exiting firm is defined as a firm that drops from one or more products to zero products.

Focusing on just the two recessionary periods, we find that the movements in the components are much larger than the decline in total shipments. The decline in total shipments was driven by large decreases in continuing products of incumbents, the net dropping of products by incumbents, and the net exit of firms (exit minus entry).

From Figure 1-1, we can see that the contributions of product adding or dropping (or the sum of the contributions of firm entry and exit and the dropping and adding of products by incumbent firms) is much larger than the contributions of simply the entry and exit of firms. Between 00-09, on average, the contributions of entry and exit were 4.5 percent and -7.3 percent, while the contributions of the adding and dropping of products were 13.0 percent and -13.0 percent. Thus, it is important to not only examine the entry and exit of firms, but to focus on the adding and dropping of products by existing incumbent firms.

(Insert Figure 1-1 here)

The key takeaway is that on average between 1999 and 2009 and even just during downturns, firms are entering and adding products at the same time as they are exiting and dropping products. There is, however, scant theoretically grounded empirical work on how macroeconomic shocks affect the entry and exit of products at the business cycle frequency. The main concern of this paper is how business cycle shocks such as total factor productivity, foreign demand, and government demand affect product dynamics at the firm level: the entry and exit of firms, and the adding and dropping of products by incumbent firms. Thus, in analyzing product dynamics at the firm level, we need macroeconomic models that allow for the simultaneous adding and dropping of products of incumbent firms at the business cycle frequency—or of multiproduct firms in dynamic general

equilibrium.

In this paper, we empirically relate firm-level product dynamics to macroeconomic shocks such as aggregate productivity, foreign demand, government expenditures and real exchange rates at the business cycle frequency. Our empirical specifications are motivated by the Dekle, Jeong and Kiyotaki (2014) (referred as DJK hereafter) multiproduct firm model. DJK develop a dynamic general equilibrium model in which the products added and dropped at the firm level depends upon aggregate shocks³ Firms are heterogeneous, facing recurrent firm-product specific shocks and aggregate shocks, such as shocks to aggregate productivity, foreign demand and liquidity preference. Each firm potentially can produce multiple products and decides whether and how much to produce each product in domestic and export markets. From their model, we can trace how certain macroeconomic shocks can determine product entry and exit, and thus the evolution of the number of products and product adding and dropping rates. The authors show that an aggregate productivity improvement lowers the costs of the entry of new establishments and products and raises the total number of products. Shocks to increase foreign demand and government expenditures also encourage entry and raise the total number of products.

Our aim is estimating the impact of macroeconomic shocks on product entry and exit at the firm level. To the best of our knowledge, this paper is one of the first to estimate a model of product adding or dropping at the firm level at the business cycle frequency, with well identified macroeconomic shocks, such as total factor productivity, foreign demand, and government demand. The estimated equations are “structural” in the sense that the specifications are based on a dynamic general equilibrium model and that the explanatory variables are exogenous or predetermined (if the model is true).

³Bilbie, Ghironi and Melitz (2012) also relate product level dynamics to macroeconomic shocks. They do not, however, relate macroeconomic shocks to product adding and dropping at the firm level, since the authors model only single-product firms.

While there is a large theoretical and empirical growth literature examining the long-run determinants of innovation and introduction of new products, the literature on the short-run or business cycle frequency determinants of the number of new products is scant. In an important paper, Shleifer (1986) developed a model in which in times of high aggregate demand, entrepreneurs innovate and introduce new products. The idea is that only during favorable macroeconomic conditions are implementing new products profitable. In a series of industry level case studies, Schmookler (1966) showed that the more intense the aggregate demand, the more patentable ideas were generated. In this paper, we estimate an empirical specification structurally linked to a conventional business cycle model and show that positive macroeconomic shocks stimulate new product introductions.

We obtain our product level data used in this paper from the Japanese *Census of Manufactures*. The Japanese *Census of Manufactures* is unique in that the value of shipments can be obtained all the way down to the 6-digit level (which we “products”), and the product level shipment data and establishment (and firm) level accounting data are available at the annual frequency, making the data suitable for analysis at the business cycle frequency. Moreover, to use the framework of DJK, we need to aggregate the product level data up to the firm level. *The Census of Manufactures* allows this aggregation. Products can be aggregated into establishments (plants), and plants can be matched to the parent firm using firm identifiers.⁴

Empirical results using our unique dataset show the plausibility of crucial parts in the DJK model. Key aggregate variables such as aggregate productivity, foreign demand, and government

⁴ In U.S. Census data, the usual product level data are only available down to the 5-digit level and are not available at the annual frequency (Bernard, Redding, and Schott, 2010). Also, although available at a higher frequency, U.S. store scanner-type product level data as used by Broda and Weinstein (2010) and U.S. Bureau of Labor Statistics individual producer price level data used by Nakamura and Steinsson (2012) need to be first matched to firm level accounting data at the annual frequency before performing the empirical work that we do here.

expenditures increase number of products. In the DJK model, they assume that opportunities to produce new products are given by the probabilistic parameters, although these parameters do not affect the effect of aggregate variables on the total number of products. However, as we use firm-level data in the empirical studies, we examine the effect of firm-level TFP on the number of products beyond the framework of DJK model. Firm-level TFP is measured from a production function with multiple products developed by De Loecker (2012). In the empirical studies including a firm-level variable, we find that not only high productivity firms but also low productivity firms produce new products aggressively. We guess that low productivity firms create new products for their survival.

Our paper is organized as follows. In the next Section, we motivate the empirical specifications in this paper. In Section 3, we explain the construction of our product-firm level dataset. We also explain how we construct aggregate variables such as total factor productivity, foreign demand, government demand and the real effective exchange rates at the industry levels. In Section 4, using our constructed data set, we provide an overview of product dynamics and exports in Japanese manufacturing firms. In Section 5, we present our estimates on the effects of shocks to aggregate productivity, foreign demand, government spending, and the real exchange rate on the number of products at the firm level. We also examine how the firm-level productivity affects the movements in number of products. In the last section, we summarize our results and consider future agenda.

2. Product Dynamics and Macroeconomic Shocks

Dekle, Jeong, and Kiyotaki (2014) construct a dynamic general equilibrium model of a small open economy with a rich production structure. Firms are heterogeneous and potentially produce many differentiated products. The firm is defined as a collection of differentiated products, each product having heterogeneous productivity.

Their model differs from the usual general equilibrium, dynamic models of firm entry

and exit in that their focus is on the addition and deletion of products by incumbent firms. The authors model the product evolution mechanism of both entering and incumbent firms. The product innovation mechanism described below by necessity is highly stylized, to permit clean aggregation into a dynamic general equilibrium model. Here we summarize only the key features of their model relevant for estimating the relationship between aggregate shocks and product dynamics..

When a new firm or a new product line of an incumbent firm pays a sunk cost κ_E to enter, it draws an opportunity to produce a new differentiated product with a certain probability of success. The productivity of a new product is heterogeneous and is distributed according to a Pareto distribution with success. The firm with the production opportunity must pay a fixed cost in order to produce the product and maintain the productivity. Firms that pay the maintenance cost may succeed to maintain the productivity of the product with probability $1-\delta$ and lose the productivity of the product completely with probability δ .

In addition, independently from the success or failure of maintaining the existing product, each product that the firm pays the maintenance cost yields an opportunity to produce another new product with certain probability $\lambda\delta$, and the productivities of new products are distributed according to a similar Pareto distribution,⁵ Through these birth and death of differentiated products, the firm may add new products, maintain the existing products, replace the products, or drop the existing products.

We can express this product evolution mechanism in terms of the change in the number of products (ΔN_t) in the following way. Let N_{Et} be the total number of new product line at time t . Each new product line draws the opportunity of producing a new product from date $t+1$, with

⁵ The idea here is that new products “spin-out” from old products. Say, Apple is working on the I-pod. Whether the I-pod will continue to be successful or not is stochastic, but only by working on the I-pod will there be a chance that the I-phone will be “spun-out” (they are based on similar technologies).

probability λ_E . A new product line can be started by incumbent firms or new firms entering with a new product. Let $1-\omega$ be the exogenously given proportion of new product lines started by newly entering firms (as opposed to incumbent firms). Then the number of new products produced by new firm entrants will be:

$$(1 - \omega)\lambda_E N_{Et} \quad (1).$$

Incumbent firms on the other hand will have two means of increasing the number of products: (1) by starting new product lines, $\omega\lambda_E N_{Et}$; and (2) by spinning out new products from existing products, $\delta\lambda N_t$. At the same time, incumbent firms will be dropping products through failed maintenance, $\delta(1 - \delta\lambda)N_t$ and the closing of existing product lines, reducing the number of their products by: $(-\delta\omega\lambda_E N_{Et})$.

Thus, the expected total number of products added by incumbent firms are:

$$(1 - \delta)[\delta\lambda N_t + \omega\lambda_E N_{Et}] \quad (2)$$

where $1-\delta$ is the probability that the productivities of the existing products will be maintained.

The expected total number of products dropped by incumbent firms are:

$$\delta[(1 - \delta\lambda)N_t - \omega\lambda_E N_{Et}], \quad (3)$$

where δ is the probability that the productivities of the products drop to zero. Thus, the total change in the number of products ΔN_t is the net number of products added by existing firms and the number of products added by the setting up of new establishments and by new firm entrants.

Subtracting (3) from the sum of (1) and (2), and collecting terms, we have:

$$\Delta N_{it} = (-\delta + \delta\lambda)N_{it} + \lambda_E N_{Et} \quad (4)$$

where we subscript by i to denote firm i $(-\delta + \delta\lambda) < 0$.⁶ Note that existing firms are

⁶This assumption is necessary in DJK to guarantee the existence of the steady-state in the model. That is, there are negative scale effects in the introduction of new products by incumbent firms. In

heterogeneous, differing by their number of products at time t . This is because each incumbent firm will have a different sequence (history) in the draws of new products and the maintenance of existing products, resulting in different N_{it} .

Aggregate Shocks and New Products.

The entry of new firms and the introduction of new product lines in incumbent firms, N_{Et} , depends on the free entry condition of the model, where the new product lines in entrants or existing firm when the costs of entry are lower than the expected present discounted value of profits:

$$\kappa_{Et} = \lambda_E E_t (\Omega_{t,t+1} V_{t+1}) \quad (5)$$

where κ_{Et} is the sunk cost of entry of the firm; λ_E is the probability of drawing a new product; $\Omega_{t,t+1}$ is the stochastic discount rate of consumers; and V_{t+1} is the value function of firms, or the present discounted value of profits from time $t+1$ onwards.

Importantly, aggregate shocks affect the evolution of the number of products through the above free-entry condition. These aggregate shocks include aggregate productivity (Z_t), foreign demand (Y_t^*), and government demand (G_t) shocks. Suppose that a positive macroeconomic shock such as Y_t^* hits the firm. The shock raises the present discounted value of profits facing the firm, and the firm starts a new product line. At the same time, through unsuccessful

fact, this negative scale effect—or decreasing returns to scale at the firm level—is a necessary condition for the DJK model to have a steady-state. Only through the entry of new firms and establishments will the total number of products be maintained or increasing over time. The DJK model is a neoclassical growth model with a well-defined steady-state. As in such models, the steady-state aggregate number of products, N^* , is invariant to business cycle shocks. When a positive macroeconomic shock hits and raises $N(t) > N^*$, over time $N(t)$ decreases from above to return back to steady-state N^* . Between the time of the macroeconomic shock and reaching the steady-state, $N(t)$ is higher than at the steady state. There are more products and the level of GDP is higher after the positive macroeconomic shock than in the steady-state.

maintenance, the firm loses products. Thus, as observed in Figure 1-1, we can simultaneously see the adding and dropping of products on average throughout the sample period and firms are dropping products even in response to a positive macroeconomic shock.

To close the model, consumers supply labor, consume final goods (which is produced from many differentiated intermediate products), and hold home and foreign bonds to maximize expected utility. The state of the economy can then be described by the set of variables $M_t = (N_t, D_t^*, Z_t, G_t, Y_t^*, \zeta_t)$, where N_t is the aggregate number of products, D_t^* is the level of net foreign assets, and ζ_t is the liquidity shock to holding net foreign assets. The first two are endogenous and the last four are exogenous. The aggregate state variables are respectively, the total number of products in the economy, the aggregate stock of net foreign assets, total factor productivity, foreign demand, and the liquidity shock from holding foreign bonds. All of the other endogenous variables in the model such as aggregate consumption, labor supply, and the exchange rate are functions of M_t through all the equilibrium equations of the DJK model, including the free entry condition (5).

Equation (4) above can be estimated by firm level data with information on the number of products by firms. As summarized in Equation (4), $N_i(t+1) - N_i(t) = \Delta N_i(t)$ depends on the exogenous stochastic shocks that affect the firm's draws of maintenance and spinouts from the existing products, as well as the endogenous choice of the firm to add new product lines. The endogenous choices depend on the entire general equilibrium structure of the DJK model and are driven by macroeconomic shocks such as total factor productivity, government spending and foreign demand shocks. As mentioned, we expect $\Delta N_i(t)$ to be a decreasing function of $N_i(t)$ as existing firms tend to have a smaller number of positive spinouts and innovation than the unsuccessful maintenance of existing products.

Estimation Strategy of the Model.

In the estimation, the aggregate shocks that affect the evolution of ΔN_{it} are included at the

industry level to increase the cross-section variation and the precision of the estimates. For the two demand shocks, government (G_t) and foreign demand (Y_t^*), let y_{tk}^* and g_{tk} be the industry-level foreign and government demand shocks for industry k (such as television and radio receivers). For the aggregate TFP supply shock (Z_t), let z_{tk} be the k sector-level TFP shock. Assume that the impact of sector level shocks on the dependent variable are proportional to the impact of aggregate level shocks: $g_{tk} = \gamma_{gk}G_t$, $y_{tk}^* = \gamma_{y^*k}Y_t^*$, and $z_{tk} = \gamma_{zk}Z_t$, where the constant of proportionality differs by sector.⁷ Then after taking logs of the above expressions of these sector level shocks, we obtain, say for government demand shocks, $\ln g_{tk} = \ln G_t + \ln v_{gk}$. Then we can substitute sector-level shocks for aggregate shocks, provided that we also include intercepts that differ by industry ($\ln v_{gk}$ or industry level dummy variables) in the estimation.

In DJK, shocks to aggregate government spending, foreign demand, and aggregate TFP are modelled as an AR(1) process. In our estimation below, we include two different sector-level shocks. First, we include the sector-level shocks, g_{tk} , y_{tk}^* , and z_{tk} by themselves. The assumption is that the total levels of these variables represent a “shock” or “surprise” to the agents in the model. Second, we model the sector-level macroeconomic shock processes as an AR(1) process (following DJK), estimate the process, and use the estimated residuals as the “shock” component. In both cases, the coefficients on the shocks are interpreted as the impact of the particular macroeconomic shock on the evolution of the number of products.

Inclusion of Firm Level TFP

⁷ DiGiovanni, et. al. (2014) use sectoral level shocks to capture the impact of aggregate shocks. We use the narrower measure of industry level shocks to capture the impact of aggregate shocks. Foerster, et. al. (2011) develop a standard multisectoral neoclassical growth model and shows that the vector of industry output growth rates follow the factor time-series model: $\varepsilon_{kt} = \beta_k S_t + v_t$, where ε_{kt} is the shock to the output industry k, β_k is the matrix of coefficients that reflects how the vector of aggregate shocks S_t affect industry k's output. Thus, in Foerster et. al.'s (2011) real business cycle model, industry level shocks are also proportional to aggregate shocks.

The specification (4) that we estimate is deliberately stylized. This stylized structure was necessary to allow the aggregation of heterogeneous firms with product innovations into a standard stochastic business cycle model. In reality, other variables would certainly influence the product evolution process at the firm level. In our alternate empirical specification (6), we add the ratio of firm level TFP to aggregate (industry) TFP (Z_t) to (4).

$$\Delta N_{it} = (1 - \delta + \delta\lambda)N_{it} + H\left(\frac{TFP_{ijt}}{TFP_{jt}}\right)\lambda_E N_{Et} \quad (6)$$

Firm level TFP depends on the entire history of product draws and the successful maintenance of the products of firm i and is predetermined. In the DJK model, N_{it} summarizes this evolution of products; firm level TFP adds no new information, and in theory, should be perfectly correlated with the number of products. In reality, however, the productivity of a firm may depend on other variables than past product draws such as corporate location and physical capital. To capture the effects of these other variables on product dynamics, we include firm-level TFP as an additional explanatory variable in our alternate specification. That is, if firm i has high TFP relative to other firms, then the firm is more likely to maintain its menu of existing products to induce spinouts and give birth to new establishments that can satisfy the free entry condition (5). Although not directly related to this paper, many growth models stress the importance of firm level TFP for product innovation (see Acemoglu, Akcigit, and Kerr, 2015). While specification (6) cannot be as easily and cleanly aggregated as specification (4) into a standard business cycle model, it would be interesting to see whether more productive firms introduce more products at the business cycle frequency.⁸

⁸ Foster, Haltiwanger, and Syverson (2008) and Syverson (2011) found persistent productivity differences across a cross-section of U.S. firms. The same productivity differences are also found across Japanese firms by Fukao and Kwon (2006) and Kawakami, Miyagawa, and Takizawa (2012).

Product Dynamics of Exporters.

While the focus of this paper is on the evolution of the total number of products of firm i , the DJK model also has predictions on how macroeconomic shocks impact the number of products that are exported. The DJK paper shows that all products with productivity greater than $a_t = \left[\frac{\alpha(\theta-1)\varphi N_t^{\frac{\theta-1}{\theta}} Z_t}{\alpha+1-\theta \varepsilon_t Y_t^*} \right]^\gamma$ will be exported. γ is a function of the parameters, θ is the elasticity of substitution of goods (both domestic and foreign), and ε_t is the real exchange rate between foreign and domestic goods. N_t and ε_t are endogenous and are affected by the exogenous shocks, Z_t and Y_t^* in the general equilibrium model.

On impact, a positive shock to Z_t will raise the total number of products in the economy N_t as more product lines are started and will depreciate the real exchange rate, as home goods become cheaper than foreign goods. However, the net effect of a positive shock to Z_t on a_t is ambiguous and depends on the parameter values and on the general equilibrium effects. We must rely on model simulations to ascertain the general equilibrium effects. Simulations in DJK show that as Z_t rises and a_t increases, the fraction of goods that are exported falls.

A positive shock to foreign demand, Y_t^* raises N_t and appreciates the real exchange rate. Again, the net effect on a_t depends on the parameter values and the general equilibrium effects. Simulations in this case show that in this case, a_t and the fraction of goods that are exported rises.

The structure of our data, the *Japanese Census of Manufacturers*, does not permit a direct observation of exported products. We only observe whether a firm is an exporter or not and the total number of products produced by the firm. In our estimation below, we form a panel of firms that are only exporters. Firms that meet the lower bound of exporting in a given year—exporters—are more productive than the average firm, because of higher N_{it} or higher TFP_{it} . This accords with the well-known empirical finding that exporters tend to be larger and more productive than

non-exporters. Thus, estimating the model on only the sample of exporters provides another way to see how firm level productivity affects how a firm responds to aggregate shocks.

3. The Japanese Census of Manufacturers Data and the Construction of Explanatory

Variables.

We construct our firm-product data using *the Census of Manufacturers* conducted by the Japanese Ministry of Economy, Trade and Industry. The *Census* is in principle, a survey of all establishments (plants) in the Japanese economy. The data are now available in the format that we require from 1998-2009 annually. Importantly, unlike in the U.S., where usable product and establishment level data are available for only every 5 years (Bernard, Redding, and Schott, 2010), in Japan, we can collect product and establishment level Census data for every year, which is more conducive to analysis at the business cycle frequency, where peaks to troughs can occur in a period as short as 2 years. We examine versions of the Census that surveys establishments at and above 5 workers, since the data covering establishments below that number of workers are not made publicly available. In 2008 for example, 263,061 establishments of 5 or more employees responded to the Census, representing over 59 percent of all Japanese manufacturing establishments.

We define “Sectors” as goods at the 2-digit Japanese Standard Industry Classification (JSIC) level; “Industries” as goods at the 4-digit JSIC level, and “Products” as goods at the 6-digit JSIC level⁹. In the data, each establishment reports the usual accounting data, such as the number of employees, raw material costs, fuel and electricity costs, tangible fixed assets, and the value of shipments (output) of the different types of “products” that the establishment produces. Examples

⁹ Industry classification in *the Census of Manufacturers* follows the Japan Standard Industry Classification (JSIC) in the case of 2-digit and 4 –digit levels. JSIC that started in 1949 is revised every five years. Every version of JSIC is adjusted to adhere to the International Standard Industry Classification (ISIC). However, in the case of the 6-digit classification, *the Census of Manufacturers* adopts its own classification.

of sector, industry, and product level classifications are shown in Table 1.¹⁰

Given that decisions on adding and dropping products and on output volumes of each product are made at the firm level and not at the establishment level, both in reality and in the DJK model, we need to identify the “firm”. One problem with the Japanese Census data is that the data do not record a firm level identifier that would allow the grouping of establishments into firms (Bernard and Okubo, 2013). Abe et. al. (2012) develop a procedure to match establishments (plants) to their parents by using information on establishment codes, address codes, and industry classifications. Using their procedure, we aggregate establishment level data into firm-level data.

Stylized facts of the Census data concerning multiple product firms are documented in Kawakami and Miyagawa (2013). Briefly, according to Kawakami and Miyagawa, in the Japanese Census, the share of multiple product firms in the total number of firms is about 40 percent, and the average multiple-product firm in Japan produces about 3 products (i.e., three different 6-digit JSIC level products). While multiple product firms represent a minority of firms, they account for 78 percent of total shipments by Japanese firms. The output (shipments) of an average multiple product firm is 50 percent higher than the average single product firm; and average employment is 28 percent higher than a single product firm. Output per worker is 30 percent higher on average in multiple product firms than in single product firms.

In the Census, we can also identify whether a particular establishment is an exporter (export value>0) and the total value of their exports in that year. However, export values or quantities are only available at the establishment level and not at the product level. At the product level, only total (not broken down into domestic and export) shipment quantities and values are available.

¹⁰ Note that what we call “products” is a much broader category than what are typically called “products” in scanner-type data. For example, in our data, a box of cereal and a bag of rice crackers will be the same product, but in scanner type data, they will be different products. Thus, the introduction of a newer product in our data is a more significant innovation than simply introducing a newer brand of cereal in scanner data.

For our empirical analysis, we need to construct some aggregated variables using both the Census of Manufacturers and other, mostly sector level data. Sector-level government expenditures, g_{tk} , are obtained from the Input- Output Tables in the Japan Industrial Productivity Database (JIP database).¹¹ We use data for only the government's direct demands for sector k. We construct sector level foreign demands, y_{tk}^* , by first obtaining exports from Japan to 4 of Japan's main export partners (in yen), the U.S., China, the European Union, and Russia in each sector (these countries account for over 90 percent of Japan's total exports). We then obtain the value added in each of Japan's export partners in each sector from the IMF's *International Financial Statistics* (converted to yen at the prevailing exchange rate). For each sector, we then sum Japan's exports and value added over the 4 countries. Finally, for each sector, we take the ratio of Japan's summed exports to our summed value added measure, and use this ratio as our sector level foreign demand variable. Applying Good, Nadiri, and Sickels (1996) to the industry level, we measure sector level TFP, z_{tk} , as follows,

$$\begin{aligned} \ln z_{tk} = & (\ln Q_{tk} - \overline{\ln Q_t}) - \sum_{h=1}^3 \frac{1}{2} (s_{tkh} - \overline{s_{th}}) (\ln X_{tkh} - \overline{\ln X_{th}}) \\ & + \sum_{s=1}^t (\overline{\ln Q_s} - \overline{\ln Q_{s-1}}) - \sum_{s=1}^t \sum_{h=1}^3 \frac{1}{2} (\overline{s_{hs}} + \overline{s_{hs-1}}) (\overline{\ln X_{hs}} - \overline{\ln X_{hs-1}}) \end{aligned} \quad (7)^{12}$$

¹¹ Hitotsubashi University and RIETI constructed the JIP database to estimate productivity at the industry level. The construction of this database is consistent with other productivity databases such as Jorgenson, Gollop, and Fraumeni (1987) and EUKLEMS..

¹² We use the JIP productivity data to obtain Good, Nadiri, and Sickles TFP measure, The simple JIP productivity TFP measure is an index and does not allow for intersector comparisons of productivity levels. The productivity measures arising from the Good, Nadiri, and Sickels procedure corrects for this index number problem and allows for interindustry comparisons. Foster, Haltiwanger, and Syverson (2008) and Syverson (2011) found persistent productivity differences across a cross-section of U.S. firms. The same productivity differences are also found across Japanese firms by Fukao and Kwon (2006) and Kawakami, Miyagawa, and Takizawa (2012).

In Equation (7), Q_{jt} is output in sector j . X_{jht} represents a production factor (h is labor, capital, or intermediate input) in sector j and s_{jht} shows share of production factor h . $\overline{\ln Z}_t$ is a geometric average of Z_{jt} (Z is Q , X , or s) in the manufacturing sector.

In most general equilibrium models, as in DJK, actual real exchange rate movements are dominated by aggregate shocks such as productivity, foreign demand, and government demand. In these models, real exchange rates are endogenous. In particular, in DJK, liquidity shocks importantly drive fluctuations in real exchange rates. However, it is difficult to find variables that capture aggregate exogenous liquidity shocks in the data. There is also a tradition in international finance starting from Meese and Rogoff (1981) that include exchange rates as exogenous variables in estimations. Meese and Rogoff justify this practice by pointing out that exchange rates are a random walk process and fundamental variables such as productivity and monetary shocks have little explanatory power in predicting exchange rates. Thus, in our estimations below, we include industry-level real effective exchange rates (ϵ_{tk}) as an additional explanatory variable, being fully aware that this variable could be endogenous.¹³

As mentioned above, instead of the actual levels of the sector variables, we also estimate shocks or “surprises” to the sector-level variables and include these “surprises” as explanatory variables. We assume that the sector-level macroeconomic variables follow AR(1) processes (consistent with

¹³ We obtain the sector-level real effective exchange rates, ϵ_{tk} , from RIETI from 2005 to 2009. Since our firm-product database runs from 1999 to 2009, we have to construct real effective exchange rate data ourselves from 1999 to 2004. As for this data from 1999 to 2004, we choose China, EU, Russia, and the US as Japan’s trade partners. We obtain trade data from the Trade Statistics published from the Ministry of Finance in Japan. The industry-level output price data are obtained from the World KLEMS database (<http://www.worldklems.net/>). We use nominal exchange rates from the IMF’s *International Financial Statistics*. Our estimates of real effective exchange rates thus constructed runs from 1999 to 2007. We link our constructed data to the RIETI data in 2005.

the impulse response analysis of DJK). We estimate the processes and take the residuals of the processes as the “shock” components to the sector-level variables. We use these residuals in an alternative set of explanatory variables to capture the “shocks” to the macroeconomic variables (results available from the authors).

Finally, in some specifications, we add the ratio of firm-level productivity to sector-level productivity as another explanatory variable. We estimate firm-level total factor productivity by using the method of De Loecker (2011) for multiproduct firms. To obtain the necessary accounting data such as the number of employees and the value added at the firm level from the Census data, we simply aggregate the data for all the establishments that the firm manages. Using the estimated coefficients, we measure total factor productivity at the firm level (as described in the Appendix).

4. Stylized facts of Japanese Product Dynamics.

Using the firm-product level data as constructed above, here we provide an overview of product level dynamics in Japan. Table 1 shows examples of sectors, industries, and products in Japan. Table 2 depicts how sectors can be divided into industries and products. For example, the food sector has 41 industries and 87 products, ships 24 billion yen worth of goods and has over a million workers. We find that the value of shipments (output) per employee is higher in industries with high capital intensity, such as the coal and the petroleum sector.

(Insert Tables 1 and 2 here)

As shown in Introduction, Figure 1-1 depicts the decomposition over time of the total change in shipments (output, solid line). Over the entire period, the biggest contributor to total shipment movements is the fluctuation in continuing products made by incumbent firms. Some continuing products expand their shipments while others contract, and their difference is pro-cyclical.

The second most important contributor to the movement in total shipments is the adding and

dropping of products by incumbent firms. Compared to the contribution of products added and dropped by incumbent firms, the contribution of the entry and exit of firms to total shipment fluctuations is small. The shipment of new products by incumbent firms dominates the shipment of new products by new firm entrants. In addition, during booms, product adding dominates product dropping, suggesting that positive macroeconomic shocks stimulate net product adding and increase the number of products. In accounting for the total change in shipments between 1999-2009, the contribution of new product shipments by incumbent firms was 13.0 percent, while the contribution of new firm entry was only 4.5 percent.

These stylized facts argue for models that allow for the adding of dropping of products of incumbent firms—or of multiproduct firms. In terms of the multiproduct DJK model, this would mean that the entry of new product lines by existing firms and the spinouts from the existing products dominate the entry of new firms in the movement of total shipments.

As further evidence for the importance of multiproduct firms, Figure 1-2 depicts the decomposition over time in the change in the total number of products. The evolution in the total number of products can be decomposed into the addition of new products by incumbent firms, the addition of new products by the entry of new firms (going from 0 to 1 or more products), and the dropping of existing products by incumbent firms, and the exit of incumbent firms (when they drop their last product). Again, the contribution of product adding and dropping dominates the contribution of firm entry and exit for the change in the total number of products.

To emphasize, regardless of whether the economy is in a boom or a recession, there are simultaneously a large number of products added and dropped by incumbent firms. Incumbent firms added products especially strongly between 2003 and 2006. In contrast to the pro-cyclical nature of product adding and firm entry, product dropping and firm exit behaviors are relatively noncyclical or even slightly countercyclical.

(Insert Figure 1-2 here)

Exporting Firms.

Since we do not observe exports at the product level in the data, we can only infer the relationship between say macroeconomic shocks and the number of exported products by examining how macroeconomic shocks affect the total number of products by exporting status. In Figure 2, we compare the number of products over time between exporters and non-exporters. It is well-known from earlier work that exporters are larger and more productive than non-exporters (Bernard, Eaton, Jenson, and Kortum, 2003). These predictions hold in the data. Figures 3 show that Japanese exporters produce a larger variety of products than non-exporters and that exporters are larger.

Compared to that of the average Japanese firm, the average number of products of exporting firms fluctuates more pro-cyclically (Figure 4). This is not only because exporting firms on average produce more products. It is also because exporters added products more rapidly over the business cycle than non-exporters. Between 2003 and 2004, exporters on averaged added 0.3 products while non-exporters added essentially none. On average, the number of added products equals to 2 for exporters and 1.4 for non-exporters.

(Insert Figures 2, 3, and 4 here)

We also find that when total exports rise, it is not the increase in the number of firms, but the increase in the number of products that is the driving force. In Figure 5, the share of firms adding products and share of entrants (both weighted by shipments) are positively correlated with movements in average export values by firm. Both shares increased when export growth accelerated in the period from 2002 to 2004, and decreased after 2009, when total Japanese exports collapsed, owing the global financial crisis. However, the fluctuations in the share of firms adding products were much larger than the fluctuations in the share of entrants.

(Insert Figures 5 here)

To summarize, these stylized facts show that a significant adjustment in Japanese output is

comprised of the adding of new products, rather than the entry and exit of firms (in addition to the expansion and contraction of the shipments of existing products). This adding of new products appears more pronounced for Japanese exporters.¹⁴ We also find that consistent with DJK, firms add and drop products at all states of the business cycle. These long-run or acyclical features of product adding and dropping are a robust characteristic of the data and capture how firms add and drop products through the normal innovative processes of product “spinouts” and “failed maintenance” that occur in all states of the business cycle.

Finally, although we do not observe exports at the product level, we find that exporters tend to be multiproduct firms and that exporters add products at a much more rapid rate than non-exporters. Product adding rates are highly correlated with average firm exports. Thus, while the total cyclical change in shipments is dominated by the change in continuing products made by incumbent firms, the cyclical change in export sales is highly correlated with the adding of new products, mostly by incumbent firms.

5. Estimation of Product Dynamics

In our estimates below, we focus on the extensive margin of adjustment in the total number of products. The estimated equations are “structural” in the sense that if the DJK model is correct, then the explanatory variables are predetermined (the firm-level variables) or exogenous (the macroeconomic shocks).

Empirical Specifications

With Only Aggregate Explanatory Variables.

¹⁴Although not observed at the business cycle frequency, these features are also present in U.S. data (Bernard, Redding, and Schott, 2010).

Our baseline specification is adopted from (4):

$$\Delta N_{it} = a + b * z_{tk} + c * y_{tk}^* + d * g_{tk} + e * N_{it-1} + \varepsilon_{it} \quad (7)$$

where N_{it-1} is the number of products at time t-1 for all firms in existence at time t-1, including firms that exited at time t-1. Since firms are continuously entering and exiting, the panel is unbalanced. N_{it} is the number of products at time t for all firms in existence at time t, including those that entered at time t. The dependent variable, the change in the number of products is $\Delta N_{it} = N_{it} - N_{it-1}$; z_{tk} are log TFP shocks in industry k; y_k^* , log foreign demand shocks in industry k; and g_{tk} are log government demand shocks in industry k. The fixed effects estimator is used to estimate equation (7), and sectoral dummy variables are included to control for sectoral heterogeneity.¹⁵ The theory developed above predicts that b, c, and d are positive and e is negative. A negative e implies negative scale effects at the firm and aggregate levels.

We measure macroeconomic shocks in two ways. First, we just include the log levels of the macroeconomic variable. This assumes that the entire change in the variable represents an aggregate shock. Second, we estimate an AR(1) process for each macroeconomic variable, and include the residual component of this process as the “surprise” macroeconomic shock component. This assumption that macroeconomic processes follow an AR(1) is usually adopted in DSGE models as in DJK.

The dependent variable in Equation (7), ΔN_{it} , is the change in number of products of firm i. Following Davis, Haltiwanger, and Schuh (1996), we also conduct an alternative estimation where the dependent variable is instead the rate of change in the number of products:

¹⁵ Instead of industry-level dummy variables to control for industry-level effects, we include sectoral-level dummy variables. Recall that “sectors” are much broader than “industries.” A typical sector contains about 20 industries (In Table 2).

$$\frac{N_{it}-N_{it-1}}{N_{it}+N_{it-1}} = \text{explanatory variables} \quad (8)$$

All of the explanatory variables in (8) above are the same as those in (7).

Finally, in a separate set of specifications, we add the industry level log real exchange rate as an additional explanatory variable. While we are fully aware of the endogeneity of the real exchange rate in general equilibrium models, there is enough empirical randomness in the real exchange rate at the yearly frequency, so that the real exchange rate is effectively divorced from model fundamentals in at least the short-run. Moreover, given the external dependence of Japan's economy, it would be important to estimate the effect of changes in the real exchange rate on new product innovations.

Estimation Results with Level Variables

In Table 3-1, we depict the estimates from (7), where the dependent variable is ΔN_i .

“Observations” refer to the sum of the number of firms in each year. Since firms enter and exit from the sample in every year, the sample is unbalanced. We can see that domestic government spending is always insignificant in affecting the number of new products. Foreign demand shocks are always highly significant, suggesting that Japanese firms respond strongly to foreign demand, by entering and introducing new products. A rise in total factor productivity significantly increases the number of products, but only when foreign demand is excluded. As hypothesized, the number of products last period, N_{it-1} , is negative and highly significant in in each period, implying that the change in the number of products is mean reverting. Recall that a negative coefficient on N_{it-1} is necessary to ensure a stationary steady-state in the model, and implies that absent aggregate shocks, the aggregate number of products in the economy will be declining.

In Table 3-2, we depict the estimates from (7), where the dependent variable is the rate of change in the number of products, $\frac{N_{it}-N_{it-1}}{N_{it}+N_{it-1}}$. Again, domestic government spending is always insignificant. Aggregate TFP shocks are significant when foreign demand and government spending are dropped from the estimation; when foreign demand is included, aggregate TFP turns

insignificant. Foreign demand shocks are again highly significant in all specifications. The coefficient on N_{it-1} is again negative and highly significant.

Estimation on a Sample of Exporters

We estimate (7) on a sample of exporters. Firms are included in the exporter sample in a given year, only when the firm has exported in that year and in the previous year, in time t and in $t-1$.¹⁶ Thus, the exporter panel is also unbalanced. Since a minimum level of productivity is required to export in any given year, the sample of exporters has on average higher productivity than the broader sample. In the estimation of (7) using the change in number of products, foreign demand and government demand are generally significant (Table 3-3). The coefficient on aggregate TFP is insignificant, or even becomes negative, when it is included jointly with foreign demand. The coefficient on foreign demand for exporters is almost 6 times as large as the coefficient on foreign demand for the entire sample for firms. As shown in Figures 3-5 above, compared to the average firm, exporters appear to add products much more vigorously in booms. This high elasticity of ΔN_{it} to the business cycle shows up as high values on the coefficients of the macroeconomic variables, mainly foreign demand. In addition, we find that the increase in government spending significantly stimulates product innovation in exporters. In DJK model, the increase in government spending leads to the depreciation in real exchange rate. Responding to this depreciation in exchange rate, the exporters increase number of products.

The estimation on a sample of exporters using Davis and Haltiwanger measure is depicted in Table 3-4. Again, we can see that the coefficient on foreign demand is large and highly significant. However, the increase in government spending does not increase the rate of change in number of products.

Then, we estimate (7) including real effective exchange rate as explanatory variable.

¹⁶ To calculate ΔN_{it} in any given year for the exporter sample, we need two consecutive years of N_{it} for exporters, the present year and the year before.

When ΔN is a dependent variable, we find the positive and significant coefficients of real effective exchange rate (Table 3-5). This result implies the depreciation in real exchange rate increase in number of products in exporters.¹⁷ Instead, the significant effects of government demand shock disappear. When Davis and Haltiwanger measure in a dependent variable, real effective exchange rate has also positive and significant effects (Table 3-6).

(Insert Tables 3-1 to 3-6)

Estimation Results with Shock Variables

Replacing the level of aggregate variables to their shock variables, we estimate Equation (7). In Table 4-1, the dependent variable is ΔN_i in all firms. The estimation results are similar to those in Table 3-1. Foreign demand shocks and government spending shocks are positive and significant, which imply that those shocks stimulate net increase in products, as the DJM model expected. However, we do not find positive effects of the aggregate TFP shocks on product dynamics.

In Table 4-2, we focus on the product dynamics of export firms. We find positive and significant impacts of foreign demand shocks on product dynamics. However, we do not obtain the expected signs on the aggregate TFP shocks and government spending shocks. When we add the real effective exchange rate to explanatory variables in Table 4-2, we find that the depreciation of real exchange rate stimulate product dynamics significantly. However, the significant effects of other aggregate variables vanish (Table 4-3).¹⁸

¹⁷ We also estimate (7) including real effective exchange rate on all samples. However, we find negative and significant coefficients on real effective exchange rate, although the foreign demand has positive and significant impacts. The reason of negative impact of real effective exchange rate may be that the depreciation of real exchange rate induce the dropping of home goods, while exporters produce new goods, as our previous empirical studies (Dekle et al, (2015)) showed.

¹⁸ We also obtain similar estimation results to Tables 4-1 to 4-3, when we conduct estimations where the dependent variable is the Davis and Haltiwanger measure.

(Insert Tables 4-1 to 4-3)

Estimations including firm level TFP

As shown in Equation (6) in Section 2, firm-level TFP affects the entry and spinout decisions of firms. As these decisions are affected by the real exchange rate and existing number of products in the DJK model, the firm level TFP is an endogenous variable. However, many articles on the economic growth and industrial organization literatures such as Acemoglu et al. (2015) and Raymond et al. (2013) stress the role of productivity on product innovation. With this, we estimate the following equation including relative TFP (RTFP=firm level TFP/sector level TFP) as an explanatory variable.

$$\begin{aligned} \Delta N_{it} = & a + b * z_{tk} + c * y_{tk}^* + d * g_{tk} + e * REER_{it-1} + f * RTFP_{t-1} \\ & + g * (RTFP)_{t-1}^2 + h * N_{t-1} \end{aligned} \quad (9)$$

Usually, we assume that relative TFP monotonically increases number of products. However, we do not find significant and positive coefficients on relative TFP in our estimations including relative TFP. Then, we add not only relative TFP but also square term of relative TFP to the right hand side of Equation (7). When f is positive and g is negative, higher TFP firms create new products aggressively and lower TFP firms also try to create new products for their survival. Middle level TFP firms want to keep the current products. On the other hand, when f is negative and g is positive, middle class TFP firms try to create new products, while higher TFP firms want to keep their products and lower TFP firms quit to create new products.

As shown in the Appendix, the measurement of RTFP is based on the estimated parameters of the production function with multi product developed by DeLoecker (2011). The estimation results of Equation (9) are shown in Table 5. Considering the endogeneity of the relative TFP, we conduct not only fixed effect estimations with AR1 but also instrumental variable estimations. The instrumental variables are sector level TFP in the US and the share of government service in

the intermediate inputs by industry.

(Insert Tables 5-1, and 5-2)

In Table 5-1, the estimated results in aggregate variables are almost same as those in Figures 3 and 4. The coefficients of real effective exchange rate are positive, which means that the depreciation of real effective exchange rate increases number of products. Government spending also increases number of products in the case of all firms. As for firm level variables, we find negative coefficients on RTFP and positive coefficients on square term of RTFP. The results imply that the relationship between product innovation and firm level TFP is U-shaped which means not only higher TFP firms but also lower TFP firms are aggressive in product innovation.

When the Davis=Haltiwanger= Schuh measure is a dependent variable, we find similar results to Table 5-1. The depreciation of real effective exchange rate has positive impacts on product innovation. Government spending also has positive effects on product innovation in the case of all firms. As for firm-level variable, we find the U-shaped relationship between change in number of products and relative TFP. Even lower TFP firms are aggressive in product innovation for their survival.

Comparisons with the Results from the Aggregate Impulse Responses

In product level general equilibrium models such as DJK, common macroeconomic shocks such as aggregate productivity, government expenditure, and foreign demand shocks alter product dynamics and export behavior. To analyze their model, DJK shock their model with an AR(1) process of an aggregate shock such as TFP. In their impulse responses, DJK show that a one standard deviation (0.9 percent) increase in aggregate TFP (with auto-correlation of 0.55 in annual data) raises output by 1 percent, and depreciates the real exchange rate by 0.9 percent. Exports increase by 0.7 percent, and correspondingly, the total number of products increases vigorously in 3 to 7 years to 0.4 percent. A 1.4 percent increase in foreign demand (with auto-correlation of 0.94) increases GDP by 0.2 percent and exports by 0.8 percent. The real exchange

rate appreciates by 0.8 percent, the number of products increases slowly by 0.15 percent in 7 to 20 years. A 0.8 percent positive government expenditures shock (with auto-correlation of 0.95) raises GDP by 0.15 percent, depreciates the real exchange rate by 0.1 percent, and increases exports by 0.07 percent and the number of products by 0.08 percent. Thus, quantitatively, DJK find that aggregate TFP shocks have the greatest impact on the number of products, followed by foreign demand and government spending shocks.

In our estimates above, we have regressed the changes in the number of products (ΔN_{it}) at the firm level on macroeconomic shocks. The estimates above are not identical to what is measured in the impulse responses, where interest lies in how the aggregate number of products (ΔN_t) respond to aggregate shocks. Still, in expectation or on average, changes in ΔN_{it} should correspond to changes in ΔN_t . In our estimates above, we show that the number of products at the firm level responds very strongly to foreign demand shocks, and moderately strongly to aggregate TFP shocks. The response of ΔN_{it} to government demand shocks is more muted.

6. Concluding remarks

Policy makers in many countries are especially concerned about the new products produced within their borders. For example, the Abe administration in Japan has undertaken expansionary fiscal and monetary policies, partly in the hope of encouraging the introduction of innovative products.¹⁹ The recent expansionary monetary policy in Euro area is related in part to the desire to stimulate innovation and introduction of better products (Bergin and Corsetti, 2014).

Conceptually linking business cycles with product adding and dropping behavior at the firm level is not new; the idea goes back at least to Schumpeter. To the best of our knowledge, this paper is one of the first to estimate a model (DJK, 2014) of product adding and dropping behavior

¹⁹ In addition to improving overall productivity, new products increases consumer utility in a “love of variety” model.

for the multiproduct firm at the business cycle frequency. To estimate such a model, we need product level data that can be matched with firms at a minimum at the business cycle or annual frequency.

We construct a unique firm-product database in Japan using *the Census of Manufacturers*. The products in our database are classified down to six-digits, which is more detailed than what is available in the U.S. Census of Manufactures.

In Japan, firms change their product compositions quite frequently, although the average number of products per firm is very stable. This stability, however, hides some significant product adding and dropping behavior. The average number of products of exporters is larger and more volatile than non-exporting firms. Sales of exporters are larger than the sales of non-exporters. We also find that product adding and firm entry behavior are highly cyclical.

In our estimates without real effective exchange rate, we find that foreign demand increases the number of products. In the estimations including real effective exchange rate, we find that the depreciation of real effective exchange rate stimulates product innovation. This producer level behavior is consistent with the DJK model. However, the effects of other aggregate variables are ambiguous. When we add firm-level TFP to our estimation, we find the relationship between product innovation and relative TFP is U-shaped. The result means that not only higher TFP firms but also lower TFP firms are aggressive in product innovation.

Our empirical results suggest that creative destruction of adding new products and dropping old products by incumbent firms is an important contributor to aggregate fluctuations, and much more important than the entry and exit of firms for business cycle fluctuations. This creative destruction of products is more active under favorable macroeconomic conditions of high total factor productivity, government and foreign demand, and a depreciated real exchange rate. To revitalize stagnant industrialized countries such as Japan's, it is important for the government to implement policies that raise aggregate productivity, government, and foreign demand, such as

improving education, research and development, and stimulating infrastructure and foreign direct investment and trade, in addition to reducing the structural obstacles to slow down the product innovation process.

Appendix

We estimate a production function with multi products developed by De Loecker (2011) to obtain firm-level TFP. In his paper, the output at firm i (q_i) depends on aggregate demand in industry k (Q_k) and relative price ($\frac{P_i}{P_k}$).

$$q_{it} = Q_{kt} \left(\frac{P_{it}}{P_{kt}} \right)^{\eta_s} \exp(\xi_{it}) \quad (\text{A-1})$$

In Equation (A-1), ξ_{it} is an unobservable demand shock and η is the elasticity of substitution.

From (A-1), the revenue function in firm i is

$$R_{it} = Q_{it}^{(\eta_s+1)/\eta_s} Q_{kt}^{1/\eta_s} P_{kt} \exp(\xi_{it})^{-1/\eta_s} \quad (\text{A-2}).$$

Assuming a production function of $Q_{it} = L_{it}^{\alpha_l} M_{it}^{\alpha_m} K_{it}^{\alpha_k} \exp(\omega_{it} + u_{it})$ and log-linearizing

Equation (A-2), we obtain

$$\bar{r}_{it} (= r_{it} - p_{kt}) = \beta_l l_{it} + \beta_m m_{it} + \beta_k k_{it} + \beta_q q_{kt} + \omega_{it}^* + \xi_{it}^* + u_{it} \quad (\text{A-3}).$$

L is labor input, M is intermediate input, and K is capital input. ω is the productivity shock at firm i . Lower case letters represent the log values of upper case letters.

Assuming that production factors are allocated for the production of each product in

proportion to the output in each product, De Loecker leads to the following revenue function.

$$\bar{r}_{it} = \beta_n n_{it} + \beta_l l_{it} + \beta_m m_{it} + \beta_k k_{it} + \beta_q q_{it} + \omega_{it}^* + \xi_{it}^* + u_{it} \quad (\text{A-4})$$

In Equation (A-4), n_i is the log of the number of products at firm i .²⁰

We estimate Equation (A-4) by using two digit-level industry classifications.²¹ Using estimated parameters, we measure productivity as follows,

$$\omega_{it} = (\bar{r}_{it} - \hat{\beta}_l l_{it} - \hat{\beta}_k k_{it} - \hat{\beta}_m m_{it} - \hat{\beta}_q q_{it}) \left(\frac{\hat{\eta}_k}{\hat{\eta}_k + 1} \right) \quad (\text{A-5}).$$

The estimation results are shown in the Appendix table.

²⁰ In the case that firm i produces multi products where each product belongs to different industries, Equation (A-4) becomes more complicated. However, as most Japanese firms produce multi products within one industry (two digit level), we focus on the estimation of Equation (A-4).

²¹ Estimations were conducted by the Levinsohn=Petrin method.

Appendix tables

	Food	Beverages, tobacco and feed	Textile products	Lumber and wood products	Furniture and fixtures	Pulp, paper and paper products	Printing and allied industries	Chemical and allied products
InL	0.237 *** 40.31	0.269 *** 13.97	0.399 *** 51.42	0.378 *** 27.07	0.411 *** 21.13	0.437 *** 18.11	0.428 *** 44.63	0.233 *** 17.51
InK	0.0943 *** 6.67	0.138 *** 3.7	0.0943 *** 4.98	-0.001 -0.04	0.0574 *** 4.25	0.0157 0.54	0.0686 *** 11.12	0.0825 *** 3.67
InM	0.488 *** 30.75	0.525 *** 11.46	0.366 *** 29.71	0.467 *** 12.8	0.451 *** 22.78	0.326 *** 8.34	0.354 *** 28.85	0.59 *** 13.65
number of product	-0.159 -0.7	0.0092 0.38	-0.0074 -0.35	-0.0307 ** -2.18	0.00505 0.26	0.00954 0.51	0.0108 0.52	0.0302 ** 2.26
Inq	0.0794 *** 3.37	-0.0161 -0.75	0.057 ** 2.14	0.00672 0.36	0.0112 0.56	-0.082 *** -3.04	0.237 *** 8.12	0.0139 0.62
Number of observations	91277	10512	47800	15123	12248	20438	34400	21708
Number of group	23725	3407	15519	5677	4562	5817	9984	5196

	Petroleum and coal products	Plastic products	Rubber products	Leather tanning, leather products and fur skins	Ceramic, stone and clay products	Iron and steel	Non-ferrous metals and products	Fabricated metal products
InL	0.17 *** 3.02	0.312 *** 32.11	0.354 *** 20.79	0.386 *** 17.9	0.316 *** 31.28	0.308 *** 23.64	0.304 *** 15.41	0.398 *** 63.18
InK	0.127 *** 3.53	0.069 *** 4.78	0.0389 ** 2.01	0.0442 1.38	0.0843 *** 3.68	0.0342 1.44	0.0285 1.25	0.0412 *** 3.18
InM	0.627 *** 13.74	0.45 *** 15.41	0.506 *** 19.74	0.473 *** 8.96	0.462 *** 15.27	0.575 *** 18.15	0.581 *** 26.37	0.41 *** 37.92
number of product	0.0187 0.84	0.00376 0.3	0.0159 0.79	-0.0195 -0.73	0.0149 0.83	0.00039 0.03	-0.0236 -1.23	-0.0369 * -1.83
Inq	0.0597 1.11	0.0224 1.09	0.0501 ** 2.1	0.012 0.42	0.0428 ** 2.27	0.0905 *** 4.16	-0.105 *** -3.28	-0.0074 -0.39
Number of observations	1463	38943	8170	3506	32887	16832	10246	63563
Number of group	546	12276	2495	1278	10918	5549	3530	22255

	General- purpose machinery	Production machinery	Business oriented machinery	Electronic parts, devices and electronic circuits	Electrical machinery, equipment and supplies	Information and communication electronics equipment	Transportation equipment	Miscellaneous manufacturing industries
InL	0.363 *** 32.57	0.348 *** 48.24	0.331 *** 22.35	0.367 *** 35.59	0.316 *** 31.11	0.363 *** 18.15	0.376 *** 38.24	0.342 *** 26.8
InK	0.0263 ** 2.19	0.0227 ** 2.12	0.0712 *** 2.75	0.0758 *** 4.04	0.0709 *** 3.42	0.0816 *** 4.01	0.0777 *** 3.86	0.0665 *** 2.61
InM	0.501 *** 28.1	0.53 *** 39.97	0.491 *** 18.23	0.432 *** 30.1	0.454 *** 21.51	0.433 *** 28.87	0.408 *** 17.29	0.447 *** 11.08
number of product	-0.0188 -1.34	-0.0239 *** -3.75	-0.003 -0.11	-0.0148 -0.7	0.00407 0.23	0.0378 * 1.84	-0.0133 -1.4	0.00093 0.04
Inq	0.0463 *** 3.24	0.0194 1.29	-0.0294 -0.69	-0.0826 ** -2.42	-0.0382 * -1.68	0.0142 0.98	0.00609 0.47	0.0588 ** 2.26
Number of observations	22965	48134	16507	23118	36593	12351	34040	16255
Number of group	8478	16600	5971	7375	12334	4701	10637	6200

References

- Abe, Takeshi, Kazuya Hitomi, Yoko Konishi, Hideaki Tomita and Taisuke Uchino (2012) “A New Converter for Establishments from Japan’s Census of Manufactures: 1993-2009,” *Policy Discussion Paper*, 12-P-007, RIETI.
- Acemoglu, Daren., Ufuk Akcicgit, and William. Kerr (2015), “The Innovation Network,” manuscript, MIT.
- Aghion, Philippe, and Peter Howitt (1992) “A Model of Growth through Creative Destruction” *Econometrica* 60, pp. 323-351.
- Aghion, Philippe., Richard Blundell , Rachel Griffith, Peter Howitt, and Susanne Prantl (2004), “Entry and Productivity Growth: Evidence from Microlevel Panel Data,” *Journal of European Economic Association*, 2(2-3): pp. 265-276.
- Alessandra, G. and H. Choi (2007). “Do Sunk Costs of Exporting Matter for Export Dynamics,” *Quarterly Journal of Economics*, 122(1).
- Axaroglou, Kostas, (2003) “The Cyclicalty of New Product Introductions” *Journal of Business* 76, 29-48.
- Bergin, P. and G. Corsetti (2014), “International Competitiveness and Monetary Policy,” manuscript, Cambridge University.
- Berman, Nicholas, Philippe Martin, and Thierry Mayer (2011) “How Do Different Exporters React to Exchange Rate Changes?” *Quarterly Journal of Economics* 127, pp. 437-492.
- Bernard, Andrew, B., Jonathan Eaton, J. Bradford Jensen, and Samuel Kortum (2003) “Plant and Productivity in International Trade” *The American Economic Review* 93(4) pp. 1268-1293
- Bernard, Andrew, B. and Toshihiro Okubo (2013), “Multi-Product Plants and Product Switching in Japan” *RIETI Discussion Paper Series*, 13-E-069.
- Bernard, Andrew, B., Stephen J. Redding, and Peter K. Schott (2010) “Multi-Product Firms and

- Product Switching,” *The American Economic Review*, 100, pp. 70-97
- Bilbie, Florin., Fabio Ghironi, and Mark Melitz (2012), “Endogenous Entry, Product Variety, and Business Cycles,” *Journal of Political Economy*, 120(2): pp. 304-345.
- Broda, Christian and David Weinstein (2010). “Product Creation and Destruction: Evidence and Price Implications,” *The American Economic Review*, 100(3), pp. 691-723.
- Chatterjee, Arpita, Rafael Dix-Carneiro, and Jade Vichyanond (2013) “Multi-Product Firms and Exchange Rate Fluctuations” *American Economic Journal: Economic Policy* 5, pp. 77-110.
- Corsetti, Giancarlo, Philippe Martin, and Paolo Pesenti (2007) “Productivity, Terms of Trade and ‘Home Market Effect’” *Journal of International Economics* 73, pp. 99-127.
- Davis, Steven, John Haltiwanger, and Scott Schuh (1996), *Job Creation and Destruction*, Cambridge, M.A.: MIT Press.
- Dekle, Robert, Hyeok Jeong, and Nobuhiro Kiyotaki (2014) “Dynamics of Firms and Trade in General Equilibrium” unpublished manuscript March, 2014,”
- Dekle, Robertt, Atsushi Kawakami, Nobuhiro Kiyotaki, and Tsutomu Miyagawa (2015) “Product Dynamics and Aggregate Shocks: Evidence from Japanese Product and Firm Level Data” RIETI Discussion Paper Series 15-E-137.
- DeLoecker, J. (2011), “Product Differentiation, Multi-product Firms, and the Impact of Trade Liberalization on Productivity, 79(5): pp. 1407-1451.
- Di Giovanni, Julian, Andrei A. Levchenko, and Isabelle Méjean (2014) “Firms, Destinations, and Aggregate Fluctuations,” *Econometrica* 82, pp. 1303-1340
- Foster, Lucia, John Haltiwanger, and Chad Syverson (2008), “Reallocation, Firm Turnover, and Efficiency: Selection on Productivity or Profitability?” *The American Economic Review* 2008 98, pp.394-425.
- Fukao, Kyoji, and Hyeog Ug Kwon (2006), “Why Did Japan’s TFP Growth Slow Down in the Lost Decade? An Empirical Analysis Based on Firm-Level Data of Manufacturing Firms”

- The Japanese Economic Review* 57, pp. 195-228.
- Ghironi, Fabio and Marc J. Melitz (2005), “International Trade and Macroeconomic Dynamics with Heterogeneous Firms” *Quarterly Journal of Economics* 121, pp. 865-915.
- Goldberg, Pinelopi Koujianou, and Michael Knetter (1997) “Goods Prices and Exchange Rates: What Have We Learned?” *Journal of Economic Literature* 35, pp. 1243-1272.
- Good, David, Isaq Nadiri, and Robin Sickles (1997) “Index number and Factor Demand Approaches to the Estimation of Productivity”, M. Hashrem Perasan and Peter Schmit eds., *Handbook of Applied Econometrics: Vol. 2, Microeconometrics*, Oxford, England: Basic Blackwell.
- Jorgenson, Dale, Frank M. Gollop, and Barbara M. Fraimani (1987) *Productivity and U.S. Economic Growth*, Harvard Economic Studies Vol. 159.
- Kawakami, Atsushi, Tsutomu Miyagawa, and Miho Takziawa (2011) “Revisiting Productivity Differences and Firm Turnover –Evidence for Product-Based TFP Measure in the Japanese Manufacturing Industries” *RIETI Discussion Paper Series* 11-E-064.
- Kawakami, Atsushi, and Tsutomu Miyagawa (2013) “Product Switching and Firm Performance in Japan” *Public Policy Review* 9, pp. 287-314, Policy Research Institute, Ministry of Finance.
- Krugman, Paul (1987) “Pricing to Market When the Exchange Rate Changes”, S. Arndt and J. Richardson eds., *Real-Financial Linkages among Open Economies*, The MIT Press, Cambridge, MA.
- Meese, R. and K.Rogoff (1983), “Empirical Exchange Rate Models of the Seventies: Do They Fit Out of Sample,” *Journal of International Economics*, 14: 3-24.
- Moreira, S. (2016). “Firm Dynamics, Persistent Effects of Entry Conditions and Business Cycles,” manuscript, University of Chicago.
- Olley, G. Steven and Pakes, Ariel (1996) “The Dynamics of Productivity in the

- Telecommunications Equipment Industry”, *Econometrica*, 64, pp. 1263-1293.
- Melitz, Marc, J., (2003) “The Impact of Trade on Intra-Industry Reallocations and Aggregate Industry Productivity” *Econometrica* 71, pp. 1695-1725.
- Nakamura, Emi and Jon. Steinsson (2012). “Lost in Transit: Product Replacement Bias and Pricing to Market,” *American Economic Review*, 102, 3277-3316.
- Sato Kiyotaka, Junko Shimizu, Nagendra Shrestha, and Shajuan Zhang (2012) “The Construction and Analysis of Industry-specific Effective Exchange Rates in Japan” *RIETI Discussion Paper Series* 12-E-043.
- Shioji Etsuro (2012) “The Evolution of Exchange Rate Pass-Through in Japan: A Re-evaluation Based on Time-Varying Parameter VARs” *Public Research Policy* 8, 67-92, Policy Research Institute, Ministry of Finance.
- Schleifer, Andrei. (1986). “Implementation Cycles,” *Journal of Political Economy*, 94(6); 1163-1190.
- Schmookler, Jacob, (1966). *Innovation and Economic Growth*. Cambridge: Harvard University Press.
- Syverson, Chad (2011) “What Determines Productivity?” *Journal of Economic Literature* 49, pp. 326-365.
- Yasar, Mahmut, Raciborski, Rafal and Poi, Brian (2008) “Production Function Estimation in Stata Using the Olley and Pakes Method”, *The Stata Journal*, 8, pp. 221-231.

Table 1

Sector 2-digit SIC	Industry 4-digit SIC	Product 6-digit SIC		
30	Information and communication electronics equipment	301111 Telephone sets		
		301112 Automatic telephone exchange switchboards		
		301113 Auxiliary equipment of telephone exchange switchboards		
		301119 Miscellaneous wired telephone sets		
		301121 High-speed facsimiles, including ultra-high-speed ones		
		301122 Facsimiles, except high-speed ones		
		301129 Miscellaneous wired telecommunication equipment		
		301131 Digital transmission equipment		
		301132 Transmission equipment, except digital transmission equipment		
		3012 Mobile phone and PHS	301211 Cellular telephone sets and PHS telephone sets	
		3013 Radio communication equipment	301311 Radio and TV broadcasting equipment	
			301312 Fixed-station communication equipment	
			301313 Miscellaneous mobile-station communication equipment	
			301314 Portable communication equipment	
			301315 Radio applied equipment	
		3014 Radio and television set receivers	301319 Miscellaneous radio communication equipment	
			301411 Radio receivers	
			301412 Plasma television receivers	
			301413 Liquid crystal television receivers	
		3015 Railway signal and safety appliances	301419 Miscellaneous television receivers	
			301511 Railway signal and safety appliances	
		3019 Miscellaneous communication equipment and related products	301512 Parts, attachments and accessories of railway signal and safety appliances	
			301911 Fire alarm equipment	
		3021 Video equipment	301919 Miscellaneous communication related products	
			302111 Recording and duplicating equipment	
			302112 Video cameras, except broadcast video cameras	
		3022 Digital camera	302113 Parts, attachments and accessories of video recording and duplicating equipment	
			302211 Digital cameras	
		3023 Electric audio equipment	302212 Parts, attachments and accessories of digital cameras	
			302311 Stereo sets	
			302312 Car stereo sets	
			302313 Tape recorders	
			302314 Digital audio disc players	
			302315 High fidelity (HI-FI) amplifiers	
			302316 Speaker systems for HI-FI and cars	
			302317 Hearing aids	
			302319 Miscellaneous electric audio equipment	
			302321 Finished speaker systems, microphones, earphones, audio pickups, etc.	
			302322 Parts, attachments and accessories of electric audio equipment	
			3031 Computer, except personal computer	303111 General computers
				303112 Midrange computers
303113 Parts, attachments and accessories of data processing machines, digital and analog computers and auxiliary equipment				
3032 Personal computer	303211 Personal computers			
	303212 Parts, attachments and accessories of Personal computers			
3033 External storages	303311 Magnetic disc equipment			
	303312 Optical disc equipment			
	303313 Flexible disc equipment			
	303319 Miscellaneous external memories			
	303321 Parts, attachments and accessories of external memories			
3034 Printer	303411 Printers			
	303412 Parts, attachments and accessories of printers			
3035 Display unit	303511 Displays			
	303512 Parts, attachments and accessories of displays			
3039 Miscellaneous peripheral equipment	303911 Finance terminal units			
	303919 Miscellaneous terminal units			
	303929 Miscellaneous input-output systems			
	303939 Miscellaneous accessories equipment			
	303941 Parts, attachments and accessories of miscellaneous accessories equipment			

Table 2

Sector	Industries	Products	Industries/ Products	Goods Shipments (million yen)	Number of Employees	Shipments per Employee (million yen)
9 FOOD	41	87	2.1	23784327	1049968	22.7
10 BEVERAGES, TOBACCO AND FEED	13	31	2.4	9802268	91072	107.6
11 TEXTILE MILL PRODUCTS	64	177	2.8	3493573	257219	13.6
12 LUMBER AND WOOD PRODUCTS, EXCEPT FURNITURE	18	43	2.4	1824205	75766	24.1
13 FURNITURE AND FIXTURES	9	22	2.4	1402558	77669	18.1
14 PULP, PAPER AND PAPER PRODUCTS	15	52	3.5	6895796	177263	38.9
15 PRINTING AND ALLIED INDUSTRIES	7	19	2.7	5724091	262370	21.8
16 CHEMICAL AND ALLIED PRODUCTS	38	160	4.2	24096231	340916	70.7
17 PETROLEUM AND COAL PRODUCTS	5	18	3.6	10241165	21956	466.4
18 PLASTIC PRODUCTS, EXCEPT OTHERWISE CLASSIFIED	25	54	2.2	9669225	383831	25.2
19 RUBBER PRODUCTS	13	40	3.1	2577212	108561	23.7
20 LEATHER TANNING, LEATHER PRODUCTS AND FUR SKINS	9	30	3.3	328166	20288	16.2
21 CERAMIC, STONE AND CLAY PRODUCTS	44	101	2.3	6186607	223326	27.7
22 IRON AND STEEL	22	65	3.0	15751510	210931	74.7
23 NON-FERROUS METALS AND PRODUCTS	17	55	3.2	6847263	136256	50.3
24 FABRICATED METAL PRODUCTS	33	127	3.8	11383456	488184	23.3
25 GENERAL-PURPOSE MACHINERY	19	97	5.1	9604354	301692	31.8
26 PRODUCTION MACHINERY	26	127	4.9	11389401	474074	24.0
27 BUSINESS ORIENTED MACHINERY	23	84	3.7	6951459	206822	33.6
28 ELECTRONIC PARTS, DEVICES AND ELECTRONIC CIRCUITS	15	68	4.5	14819858	453435	32.7
29 ELECTRICAL MACHINERY, EQUIPMENT AND SUPPLIES	23	111	4.8	13485422	453686	29.7
30 INFORMATION AND COMMUNICATION ELECTRONICS EQUIPMENT	15	55	3.7	11427859	214300	53.3
31 TRANSPORTATION EQUIPMENT	16	66	4.1	46946916	923495	50.8
32 MISCELLANEOUS MANUFACTURING INDUSTRIES	32	114	3.6	3521578	132655	26.5

Note) We calculate these values of report by industry of the 2009 census.

Table 3-1

Dependent variable: Δ number of products

	All firms	All firms	All firms	All firms	All firms	All firms	All firms
GNSTFP(t-1)	0.021 *** 3.03			0.008 1.08	0.021 *** 3.12		0.008 1.13
lnFD(t-1)		0.016 *** 8.18		0.016 *** 7.67		0.017 *** 8.31	0.016 *** 7.79
lnG(t-1)			0.000 -0.13		0.000 0.11	0.000 -0.02	0.000 0.06
Num of Products(t-1)	-0.972 *** -1259.60	-0.972 *** -1259.63	-0.970 *** -1256.51	-0.972 *** -1259.58	-0.970 *** -1256.43	-0.970 *** -1256.48	-0.970 *** -1256.41
constant	1.673 *** 1343.35	1.450 *** 78.48	1.673 *** 1291.76	1.456 *** 77.21	1.669 *** 1066.76	1.443 *** 77.46	1.449 *** 76.28
N	1947121	1947121	1946761	1947121	1946761	1946761	1946761
N_g	310357	310357	310315	310357	310315	310315	310315
r2_w	0.492	0.492	0.491	0.492	0.491	0.491	0.491
r2_b	0.007	0.007	0.007	0.007	0.007	0.007	0.007
r2_o	0.050	0.050	0.050	0.050	0.050	0.050	0.050
F	793357.80	793345.90	789479.80	528890.50	526301.20	526294.80	394717.20
p	0.00	0.00	0.00	0.00	0.00	0.00	0.00

Panel Fixed Firm-level Estimations with AR(1)

The lower cell in each estimation result shows t-value.

Standard errors are expressed in parentheses. *, **, and *** show significance at 10%, 5%, and 1% levels, respectively.

Table 3-2

Dependent variable: $(N(t)-N(t-1))/(N(T)+N(t-1))/2$

	All firms	All firms	All firms	All firms	All firms	All firms	All firms
GNSTFP(t-1)	0.004 *			-0.001	0.004		-0.002
	1.67			-0.55	1.57		-0.63
lnFD(t-1)		0.006 ***		0.006 ***		0.006 ***	0.006 ***
		6.85		6.66		6.85	6.70
lnG(t-1)			0.000		0.000	0.000	0.000
			-1.34		-1.16	-0.90	-0.96
Num of Products(t-1)	-0.240 ***	-0.240 ***	-0.241 ***	-0.240 ***	-0.241 ***	-0.241 ***	-0.241 ***
	-766.92	-766.99	-768.91	-766.96	-768.87	-768.94	-768.90
constant	0.413 ***	0.327 ***	0.416 ***	0.325 ***	0.415 ***	0.329 ***	0.327 ***
	601.86	26.99	567.63	25.68	473.78	27.01	25.76
N	1947121	1947121	1946761	1947121	1946761	1946761	1946761
N_g	310357	310357	310315	310357	310315	310315	310315
r2_w	0.264	0.264	0.265	0.264	0.265	0.265	0.265
r2_b	0.002	0.002	0.002	0.002	0.002	0.002	0.002
r2_o	0.036	0.036	0.036	0.036	0.036	0.036	0.036
F	294112.80	294139.50	295640.40	196093.70	197095.30	197113.40	147835.60
p	0.00	0.00	0.00	0.00	0.00	0.00	0.00

Panel Fixed Firm-level Estimations with AR(1)

The lower cell in each estimation result shows t-value.

Standard errors are expressed in parentheses. *, **, and *** show significance at 10%, 5%, and 1% levels, respectively.

Table 3-3

Dependent variable: Δ number of products

	Exporters	Exporters	Exporters	Exporters	Exporters	Exporters	Exporters
GNSTFP(t-1)	0.074 0.87			-0.221 ** -2.55	0.092 1.07		-0.208 ** -2.40
lnFD(t-1)		0.175 *** 15.21		0.182 *** 15.40		0.173 *** 14.95	0.180 *** 15.11
lnG(t-1)			0.012 *** 3.39		0.012 *** 3.45	0.007 * 1.93	0.006 * 1.73
Num of Products(t-1)	-1.041 *** -161.35	-1.049 *** -162.72	-1.042 *** -161.40	-1.050 *** -162.76	-1.042 *** -161.37	-1.050 *** -162.71	-1.050 *** -162.74
constant	2.930 *** 141.35	0.506 *** 4.66	2.884 *** 154.31	0.475 *** 4.36	2.857 *** 113.92	0.498 *** 4.58	0.470 *** 4.31
N	31780	31780	31780	31780	31780	31780	31780
N_g	8559	8559	8559	8559	8559	8559	8559
r2_w	0.529	0.533	0.529	0.533	0.529	0.533	0.533
r2_b	0.090	0.090	0.090	0.090	0.090	0.090	0.090
r2_o	0.058	0.058	0.058	0.058	0.058	0.058	0.058
F	13018.00	13239.50	13029.40	8830.70	8684.00	8828.00	6623.80
p	0.00	0.00	0.00	0.00	0.00	0.00	0.00

Panel Fixed Firm-level Estimations with AR1

The lower cell in each estimation result shows t-value.

Standard errors are expressed in parentheses. *, **, and *** show significance at 10%, 5%, and 1% levels, respectively.

Table 3-4

Dependent variable: $(N(t)-N(t-1))/(N(T)+N(t-1))/2$

	Exporters	Exporters	Exporters	Exporters	Exporters	Exporters	Exporters
GNSTFP(t-1)	-0.036 *			-0.030	-0.028		-0.024
	-1.76			-1.40	-1.38		-1.12
lnFD(t-1)			0.003 ***		0.003 ***	0.003 ***	0.003 ***
			3.87		3.72	3.77	3.67
lnG(t-1)		-0.011		-0.007		-0.008	-0.005
		-1.40		-0.90		-1.05	-0.67
Num of Products(t-1)	-0.136 ***	-0.136 ***	-0.136 ***	-0.136 ***	-0.136 ***	-0.136 ***	-0.136 ***
	-82.01	-81.95	-82.13	-81.96	-82.12	-82.08	-82.08
constant	0.392 ***	0.533 ***	0.363 ***	0.493 ***	0.372 ***	0.477 ***	0.446 ***
	56.55	5.31	55.45	4.74	42.78	4.72	4.27
N	31780	31780	31780	31780	31780	31780	31780
N_g	8559	8559	8559	8559	8559	8559	8559
r2_w	0.225	0.224	0.225	0.224	0.225	0.225	0.225
r2_b	0.006	0.006	0.006	0.006	0.006	0.006	0.006
r2_o	0.016	0.016	0.016	0.016	0.016	0.016	0.016
F	3362.50	3358.60	3372.60	2239.80	2248.10	2246.00	1684.80
p	0.00	0.00	0.00	0.00	0.00	0.00	0.00

Panel Fixed Firm-level Estimations with AR1

The lower cell in each estimation result shows t-value.

Standard errors are expressed in parentheses. *, **, and *** show significance at 10%, 5%, and 1% levels, respectively.

Table 3-5

Dependent variable: Δ number of products

	Exporters	Exporters	Exporters	Exporters	Exporters	Exporters	Exporters
GNSTFP(t-1)	0.119 1.18			0.023 0.21	0.132 1.30		0.037 0.34
lnREER(t-1)	0.503 *** 11.74	0.402 *** 7.08	0.494 *** 11.48	0.405 *** 6.82	0.497 *** 11.54	0.395 *** 6.95	0.401 *** 6.74
lnFD(t-1)		0.053 *** 2.63		0.051 ** 2.36		0.053 *** 2.63	0.050 ** 2.31
lnG(t-1)			0.005 1.34		0.006 1.45	0.005 1.36	0.005 1.38
Num of Products(t-1)	-1.049 *** -148.84	-1.050 *** -148.81	-1.050 *** -148.75	-1.050 *** -148.80	-1.050 *** -148.77	-1.050 *** -148.75	-1.050 *** -148.74
constant	0.682 *** 4.85	0.436 *** 2.74	0.726 *** 5.26	0.437 *** 2.74	0.675 *** 4.79	0.432 *** 2.71	0.433 *** 2.72
N	25837	25837	25837	25837	25837	25837	25837
N_g	7439	7439	7439	7439	7439	7439	7439
r2_w	0.546	0.546	0.546	0.546	0.546	0.546	0.546
r2_b	0.087	0.087	0.087	0.087	0.087	0.087	0.087
r2_o	0.059	0.059	0.059	0.059	0.059	0.059	0.059
F	7385.20	7384.40	7383.70	5537.70	5538.70	5538.90	4430.60
p	0.00	0.00	0.00	0.00	0.00	0.00	0.00

Panel Fixed Firm-level Estimations with AR1

The lower cell in each estimation result shows t-value.

Standard errors are expressed in parentheses. *, **, and *** show significance at 10%, 5%, and 1% levels, respectively.

Table 3-6

Dependent variable: $(N(t)-N(t-1))/(N(T)+N(t-1))/2$

	Exporters	Exporters	Exporters	Exporters	Exporters	Exporters	Exporters
GNSTFP(t-1)	0.013 0.48			0.022 0.81	0.021 0.79		0.029 1.04
lnREER(t-1)	0.039 ** 2.17	0.030 * 1.87	0.033 * 1.96	0.034 * 1.83	0.038 ** 2.11	0.029 1.60	0.034 * 1.81
lnFD(t-1)		-0.010 -1.07		-0.012 -1.25		-0.008 -0.82	-0.010 -1.07
lnG(t-1)			0.003 *** 2.72		0.003 *** 2.79	0.003 *** 2.63	0.003 *** 2.71
Num of Products(t-1)	-0.140 *** -75.53	-0.140 *** -75.53	-0.140 *** -75.60	-0.140 *** -75.52	-0.140 *** -75.59	-0.140 *** -75.59	-0.140 *** -75.58
constant	0.216 *** 2.74	0.399 ** 2.49	0.231 *** 3.21	0.405 ** 2.52	0.203 ** 2.58	0.358 ** 2.23	0.365 ** 2.27
N	25837	25837	25837	25837	25837	25837	25837
N_g	7439	7439	7439	7439	7439	7439	7439
r2_w	0.237	0.237	0.237	0.237	0.237	0.237	0.237
r2_b	0.006	0.006	0.006	0.006	0.006	0.006	0.006
r2_o	0.016	0.016	0.016	0.016	0.016	0.016	0.016
F	1902.40	1902.50	1905.60	1427.00	1429.30	1429.20	1143.60
p	0.00	0.00	0.00	0.00	0.00	0.00	0.00

Panel Fixed Firm-level Estimations with AR1

The lower cell in each estimation result shows t-value.

Standard errors are expressed in parentheses. *, **, and *** show significance at 10%, 5%, and 1% levels, respectively.

Table 4-1

Dependent variable: Δ number of products

	All firms	All firms	All firms	All firms	All firms	All firms	All firms
Sectoral TFP shock(t-1)	-0.017 *			-0.024 **	-0.039 ***		-0.042 ***
	-1.75			-2.41	-3.89		-4.19
InFDshock(t-1)		0.151 ***		0.156 ***		0.109 ***	0.115 ***
		6.83		7.03		4.83	5.07
InGshock(t-1)			0.036 ***		0.039 ***	0.033 ***	0.036 ***
			10.73		11.28	9.58	10.18
Num of Products(t-1)	-0.972 ***	-0.972 ***	-0.972 ***	-0.972 ***	-0.972 ***	-0.972 ***	-0.972 ***
	-1259.88	-1259.56	-1259.56	-1259.56	-1259.56	-1259.46	-1259.46
N	1947121	1947121	1947121	1947121	1947121	1947121	1947121
N_g	310357	310357	310357	310357	310357	310357	310357
r2_w	0.492	0.492	0.492	0.492	0.492	0.492	0.492
r2_b	0.007	0.007	0.007	0.007	0.007	0.007	0.007
r2_o	0.050	0.050	0.050	0.050	0.050	0.050	0.050
chi2							
F	793397.00	793405.40	793325.40	528940.90	528895.30	528885.60	396671.10
p	0.00	0.00	0.00	0.00	0.00	0.00	0.00
ll	-1104061.80	-1104036.60	-1103998.30	-1104033.10	-1103989.30	-1103984.80	-1103974.40

Panel Fixed Firm-level Estimations with AR1

The lower cell in each estimation result shows t-value.

Standard errors are expressed in parentheses. *, **, and *** show significance at 10%, 5%, and 1% levels, respectively.

Table 4-2

Dependent variable: Δ number of products

	Exporters	Exporters	Exporters	Exporters	Exporters	Exporters	Exporters
Sectoral TFP shock(t-1)	0.030 0.27			-0.001 -0.01	0.028 0.25		-0.008 -0.05
InFDshock(t-1)		1.232 *** 3.64		1.232 *** 3.63		1.328 *** 3.89	1.330 *** 3.88
InGshock(t-1)			-0.089 -1.60		-0.089 -1.60	-0.118 ** -2.12	-0.118 ** -2.12
Num of Products(t-1)	-1.041 *** -161.39	-1.042 *** -161.46	-1.041 *** -161.33	-1.042 *** -161.46	-1.041 *** -161.33	-1.041 *** -161.42	-1.041 *** -161.42
N	31780	31780	31780	31780	31780	31780	31780
N_g	8559	8559	8559	8559	8559	8559	8559
r2_w	0.529	0.529	0.529	0.529	0.529	0.529	0.529
r2_b	0.090	0.090	0.090	0.090	0.090	0.090	0.090
r2_o	0.058	0.058	0.058	0.058	0.058	0.058	0.058
chi2							
F	13023.40	13035.80	13013.60	8690.60	8675.90	8686.00	6514.60
p	0.00	0.00	0.00	0.00	0.00	0.00	0.00
ll	-35941.00	-35931.80	-35937.80	-35931.80	-35937.80	-35927.40	-35927.50

Panel Fixed Firm-level Estimations with AR1

The lower cell in each estimation result shows t-value.

Standard errors are expressed in parentheses. *, **, and *** show significance at 10%, 5%, and 1% levels, respectively.

Table 4-3

Dependent variable: Δ number of products

	Exporters	Exporters	Exporters	Exporters	Exporters	Exporters	Exporters
Sectoral TFP shock(t-1)	-0.062 -0.50			-0.074 -0.59	-0.063 -0.50		-0.074 -0.59
InFDshock(t-1)		-0.841 -1.28		-0.972 -1.32		-0.969 -1.26	-1.001 -1.30
InGshock(t-1)			-0.016 -0.28		-0.017 -0.29	0.007 0.12	0.008 0.12
InREER(t-1)	0.501 *** 11.70	0.502 *** 11.72	0.498 *** 11.54	0.503 *** 11.74	0.499 *** 11.55	0.503 *** 11.80	0.504 *** 11.82
Num of Products(t-1)	-1.049 *** -148.83	-1.049 *** -148.79	-1.049 *** -148.79	-1.049 *** -148.79	-1.049 *** -148.80	-1.049 *** -148.78	-1.049 *** -148.78
N	25837	25837	25837	25837	25837	25837	25837
N_g	7439	7439	7439	7439	7439	7439	7439
r2_w	0.546	0.546	0.546	0.546	0.546	0.546	0.546
r2_b	0.087	0.087	0.087	0.087	0.087	0.087	0.087
r2_o	0.059	0.059	0.059	0.059	0.059	0.059	0.059
chi2							
F	7384.30	7380.30	7380.80	5535.40	5535.80	5534.70	4427.90
p	0.00	0.00	0.00	0.00	0.00	0.00	0.00
ll	-28352.40	-28350.70	-28352.00	-28350.50	-28351.90	-28350.60	-28350.40

Panel Fixed Firm-level Estimations with AR1

The lower cell in each estimation result shows t-value.

Standard errors are expressed in parentheses. *, **, and *** show significance at 10%, 5%, and 1% levels, respectively.

Table 5-1

Dependent variable: Δ number of products

	FE(AR1)	FE(AR1)	FE(IV)	FE(IV)	FE(AR1)	FE(AR1)
	All firms	Exporters	All firms	Exporters	All firms	Exporters
relativeTFP(t-1)	-0.035 *** -7.20	-0.100 *** -2.41	-0.018 *** -5.22	-0.193 *** -5.76	-0.033 *** -6.75	-0.080 *** -1.93
relative TFP(t-1)*2	0.0159 *** 3.51	0.125 *** 3.66	0.007 *** 2.14	0.096 *** 3.11	0.016 *** 3.60	0.111 *** 3.26
sectoral TFP(t-1)	-0.006 * -0.32	-0.298 ** -2.26	0.018 -0.55	-0.627 *** -3.74		
lnG(t-1)	0.004 *** 5.72	0.003 0.62	-0.000 -1.60	-0.003 -0.69		
lnFD(t-1)	0.095 *** 29.28	0.190 *** 8.59	-0.006 -1.60	-0.121 * -1.85		
lnREER(t-1)	0.069 *** 7.99	0.374 *** 6.19	0.029 *** 2.66	-0.083 -1.15	0.330 *** 124.790	0.794 *** 21.320
sectoral TFP shock(t-1)					0.013 0.530	-0.925 *** -38.410
lnFDshock(t-1)					-0.626 *** -6.080	0.047 0.360
lnGshock(t-1)					0.033 *** 3.520	-0.030 -0.330
NotP(t-1)	-0.844 *** -413.44	-0.934 *** -89.10	-0.513 *** -355.59	-0.653 *** -92.00	-0.840 *** -411.89	-0.925 *** -88.41
Sample Size	387843	15066	512592	19538	388128	15066
Number of Groups	124749	4472	124749	4472	124805	4472
R2(within)	0.397	0.434			0.395	0.430
R2(between)	0.058	0.145			0.058	0.145
R2(overall)	0.059	0.087			0.060	0.087
F statistics	24725.50 0.000	1158.70 0.000	18270.30	1245.00	24534.9 0	1141.1 0
Log likelihood	-220271.40	-13772.20	-308424.90	-19351.30	-221838.8	-13826.5
Weak identification test			67684.80 0.000	4482.20 0.000		
sargan test			1.11 0.293	0.45 0.504		

Panel Fixed Firm-level Estimations with AR1 and IV

The lower cell in each estimation result shows t-value.

Standard errors are expressed in parentheses. *, **, and *** show significance at 10%, 5%, and 1% levels, respectively.

Table 5-2

Dependent variable: $(N(t)-N(t-1))/(N(T)+N(t-1))/2$

	FE(AR1) All firms	FE(AR1) Exporters	FE(IV) All firms	FE(IV) Exporters	FE(AR1) All firms	FE(AR1) Exporters
relativeTFP(t-1)	-0.008 *** -4.27	-0.028 *** -2.48	-0.004 *** -3.09	-0.062 *** -7.11	-0.008 *** -4.15	-0.026 *** -2.32
relative TFP(t-1)*2	0.022 *** 12.56	0.050 *** 5.41	0.014 *** 10.77	0.064 *** 8.00	0.022 *** 12.70	0.049 *** 5.25
industryTFP(t-1)	-0.012 * -1.75	-0.024 -0.73	-0.010 -0.83	-0.133 *** -3.04		
lnG(t-1)	0.001 *** 3.55	0.002 1.58	0.000 0.45	0.000 0.04		
lnFD(t-1)	0.026 *** 20.78	0.025 *** 4.16	-0.005 *** -3.01	-0.033 * -1.96		
lnREER(t-1)	0.019 *** 5.80	0.061 *** 3.99	0.008 * 1.85	-0.021 -1.11	0.088 *** 75.42	0.105 *** 8.91
sectoral TFP shock(t-1)					0.015 1.57	0.064 * 1.75
lnFDshock(t-1)					-0.171 *** -4.56	-0.124 -0.56
lnGshock(t-1)					0.012 *** 3.22	0.007 0.40
NofP(t-1)	-0.223 *** -294.66	-0.140 *** -50.43	-0.156 *** -282.73	-0.095 *** -51.25	-0.221 *** -292.73	-0.070 * -1.65
Sample Size	387843	15066	512592	19538	388128	15066
Number of Groups	124749	4472	124749	4472	124805	4472
R2(within)	0.251	0.198			0.249	0.197
R2(between)	0.0169	0.014			0.017	0.014
R2(overall)	0.027	0.014			0.027	0.014
F statistics	12616.7 0	373.0 0	11597.6	400.4	12452.9 0	370.1 0
Log likelihood	157334.10	6575.9	184826.7	6882.1	156689.1	6563.2
Weak identification test			67684.8 0	4482.2 0		
sargan test			1.785 0.182	1.12 0.290		

Panel Fixed Firm-level Estimations with AR1 and IV

The lower cell in each estimation result shows t-value.

Standard errors are expressed in parentheses. *, **, and *** show significance at 10%, 5%, and 1% levels, respectively.

Figure 1-1. Decomposition of shipment changes

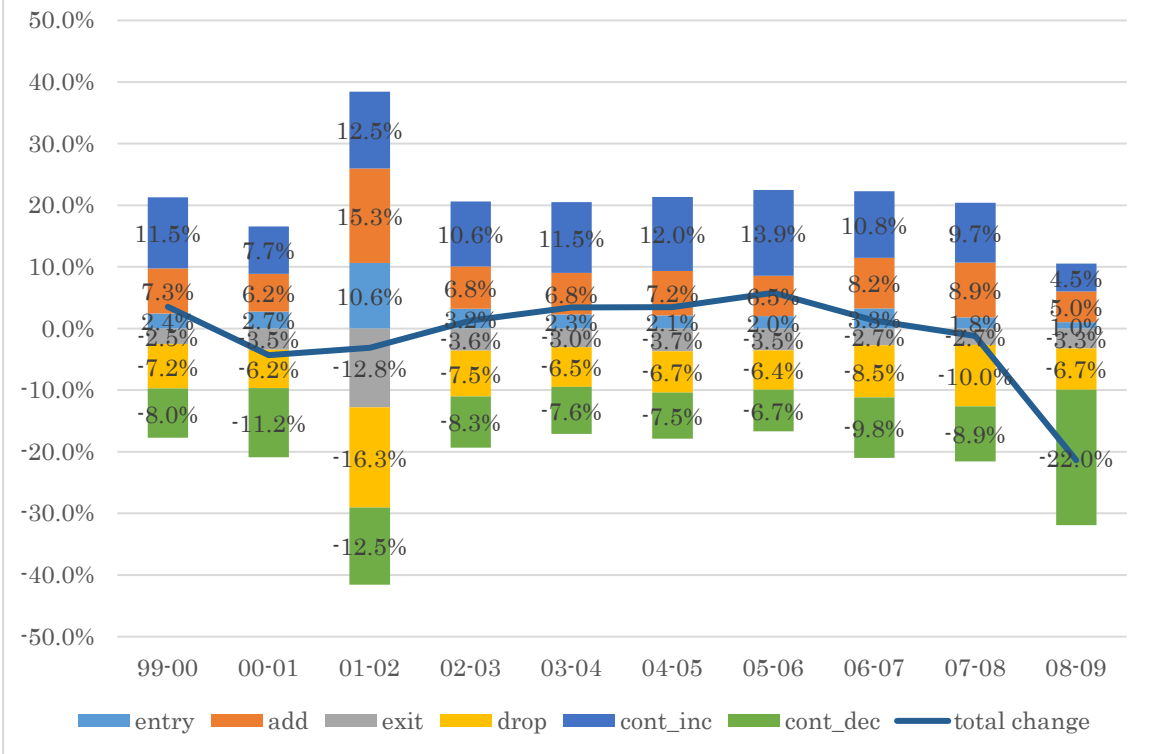


Figure 1-2. Decomposition of number of products

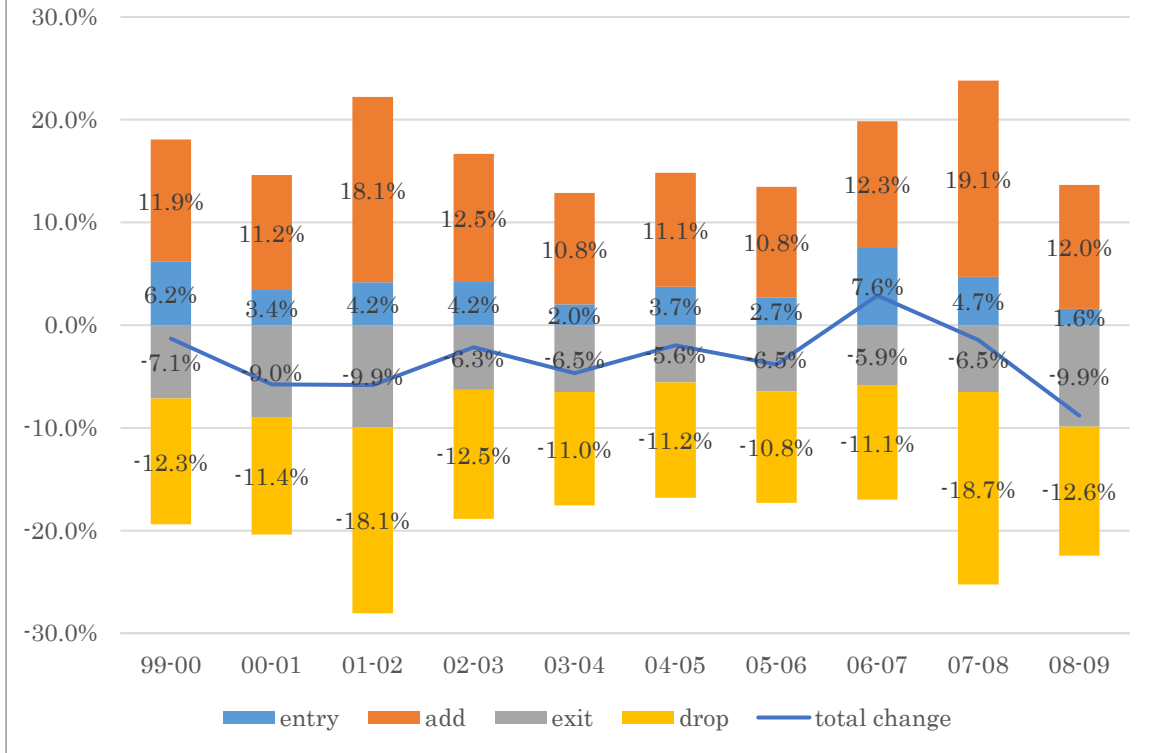


Figure 2

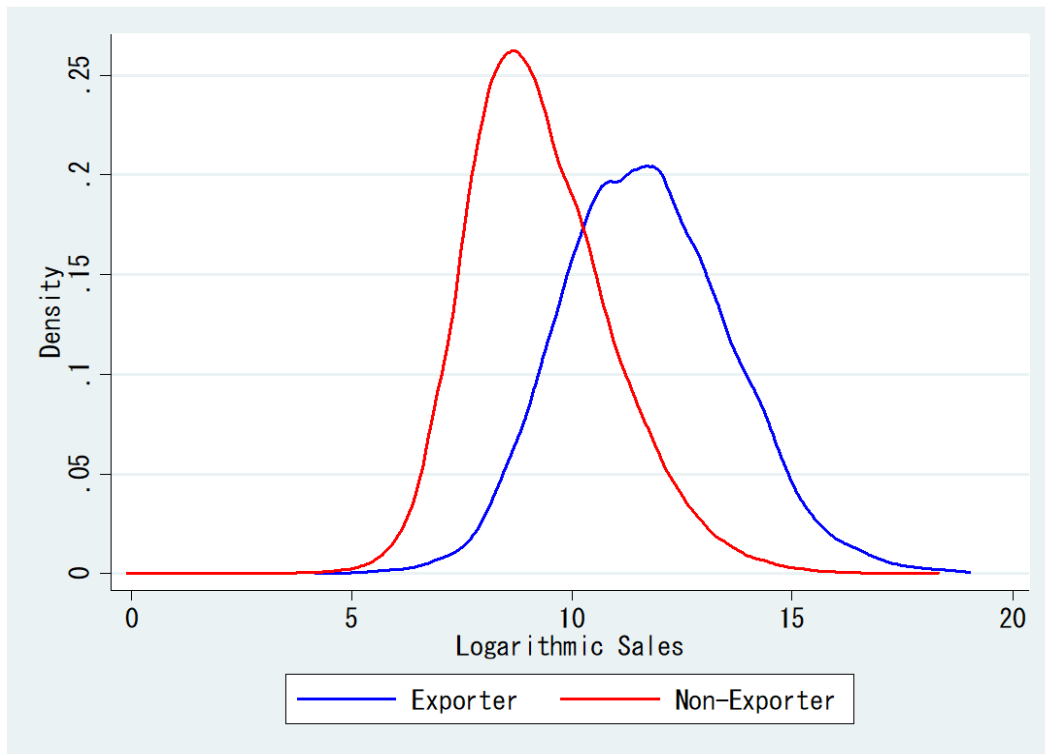


Figure 3

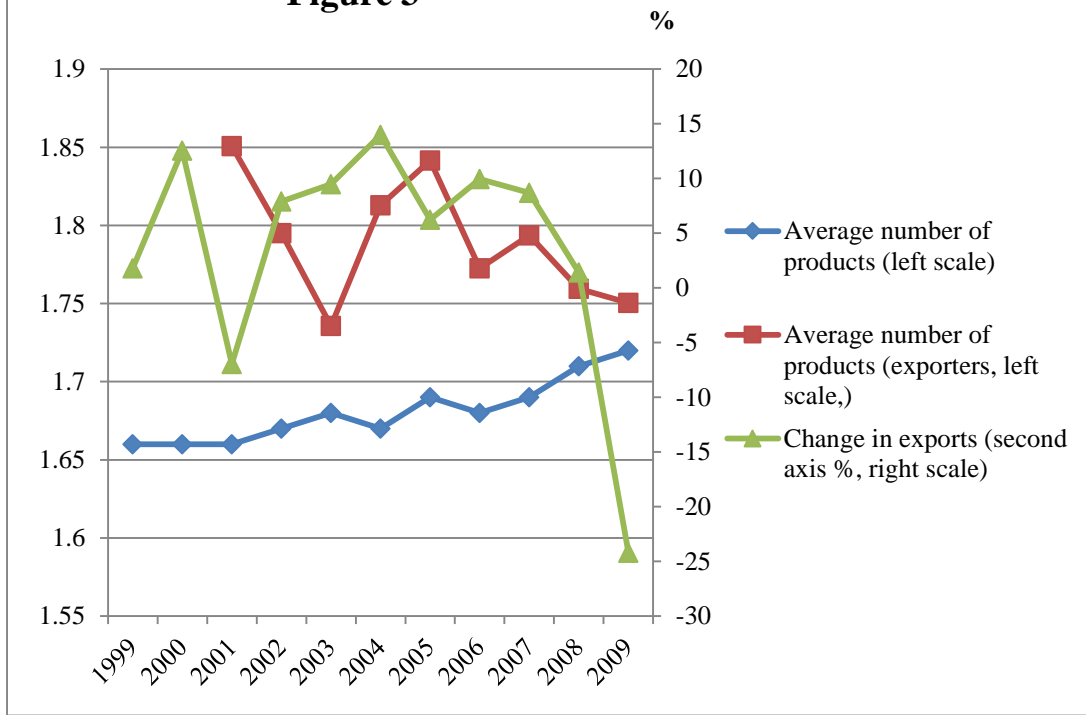


Figure 4 Number of added and dropped products

